

## **Playground Communication Board Installation Suggestions**

The Resources at Lakeshore Speech, LLC durable playground boards are made from an aluminum alloy which makes them extremely lightweight. This material holds up in all weather conditions.

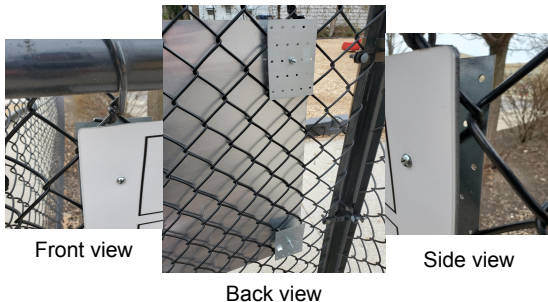
When installing a communication board, it is important to remember the height of the individuals who will be using the board. It is recommended that the top of the board be no more than 36" above the ground.

Installing the board can be extremely easy given the weight of the material. Below are a few examples of how easily the boards can be installed. Resources at Lakeshore Speech, LLC does not provide any installation instructions as it is up to the individual to deem what is best for each situation. All items pictured below were purchased at a local hardware store. Drilling this material was easily accomplished with a basic electric drill and bit.

### **Communication Boards at recommended height**



### **Nut, Bolt and Metal Plate**



### **Heavy Duty Zip Tie**



If a fence is not available, the board can easily be secured to the side of a railing on steps or on a wheelchair ramp. Ultimately, you can secure the board and easily relocate it without incurring a significant cost.